

CERTIFICATE OF LOCATION OF GOVERNMENT CORNER

NORTHEAST Corner of Section 19, Township 106, Range 39, 5TH P.M.

STATE OF MINNESOTA, County of MURRAY

At the corner location shown on the sketch:

☒ On 6/28/2024 found a 3/4" solid iron above a concrete monument
DATE

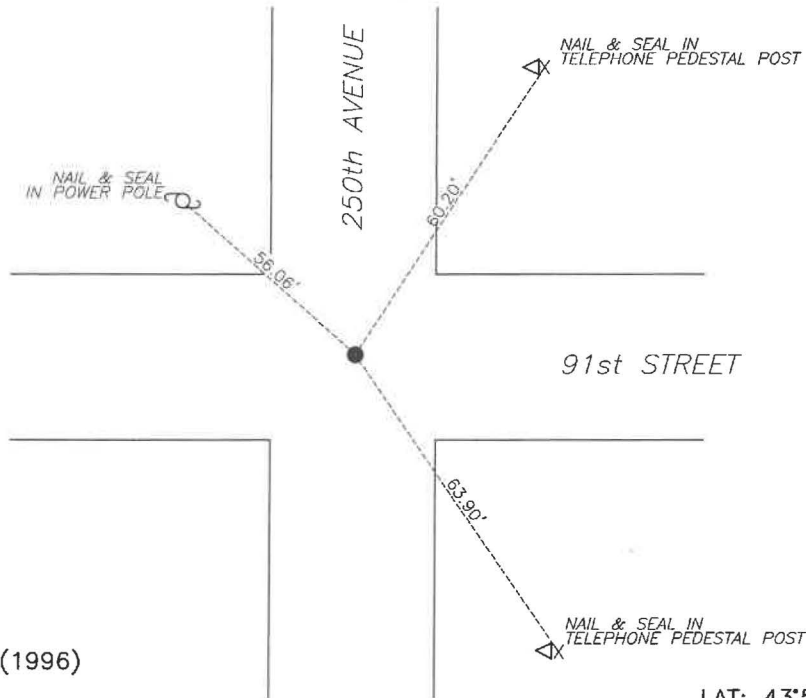
☒ left monument as found, ☐ lowered monument, ☐ removed monument (explain)

☐ On _____ placed a _____
DATE

SKETCH OF REFERENCE TIES



● MONUMENTS FOUND

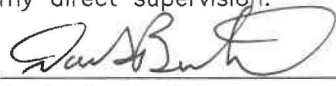


Murray County
Coordinate System NAD83 (1996)
N: 147730.936
E: 553582.292

WGS84
LAT: 43°58'43.6821"
LON: -95°33'47.2672"

Statement of evidence relative to this corner location is on back of page.

I hereby certify that this document and the data contained herein was prepared by me or under my direct supervision.


Daniel L. Bueltel
License No. 43844

3/13/2025
DATE

MAR 13 2025



MURRAY COUNTY RECORDER

Statement of Evidence

NORTHEAST CORNER SECTION 19, T106N, R39W OF THE 5th P.M.

In September 1858 W.J. Neely surveyed the east township line.

In July of 1861 J.W. Myers surveyed the north, south, and west township lines.

In August of 1861 Wellman & Smoot subdivided the township.

County records from notes a concrete monument located at the corner.

County records from May 23, 2012 note a $\frac{3}{4}$ " steel pin located at the corner.

On June 28, 2024 Bueltel-Moseng Land Surveying located a $\frac{3}{4}$ " iron above a concrete monument.